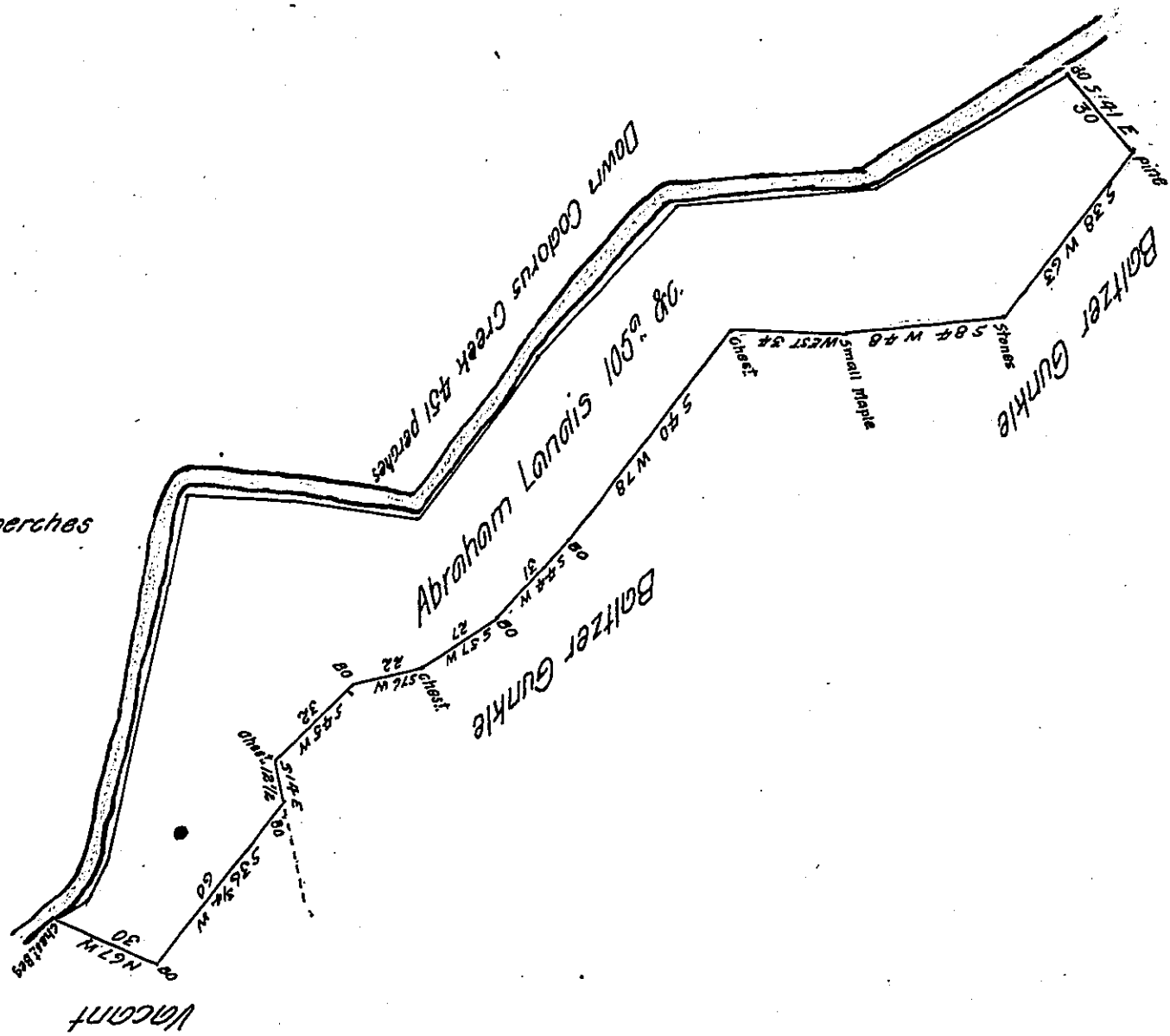


Courses down the creek from the beginning chest to the B.O. corner - viz

- N 55 E 10
- N 27 E 14
- N 12 E 110
- S 88 E 32
- S 82 E 38
- N 37 E 60
- N 41 E 60
- N 85 E 62
- N 60 E 65

451 perches



A draught of a tract of land situate in Hellam Township in the County of York Surveyed the 1st day of April 1799 to Abraham Landis in pursuance of a warrant to him dated the 22^d day of February 1799 containing one hundred and five acres and allowance of six acres P^t for roads &c.

To Daniel Broadhead Esq.
Surveyor General

John Forsythe D. S.

IN TESTIMONY that the above is a copy of the original remaining on file in the Department of Internal Affairs of Pennsylvania, made conformably to an Act of Assembly approved the 16th day of February, 1833, I have hereunto set my Hand and caused the Seal of said Department to be affixed at Harrisburg, this fourteenth day of September 1905

Loe D. Brown
Secretary of Internal Affairs.